

Yoma Bulletin

Group-wide weekly highlights

Issue 2 | 15 May 2020

HIGHLIGHT

Back in the office

The Campus News

If you are returning to the Campus next week, there are two travel options set up to ensure your health and safety:

Option 1, Campus Ferry: Remember to sanitise your hands before boarding, and to wear a mask at all times. Only one person per row is allowed. Rest assured there is plenty of room for social distancing as all ferries are operating at less than half capacity. Each ferry is also properly sanitised before and after each ride.

Option 2, Rent a Car from Yoma Car Share: For those who prefer going to work on your own, Yoma Car Share is offering rental fees from as low as 2,480 MMK/hour ++. Yoma Car Share vehicles are regularly cleaned and sanitised. Please contact aung@yomafleet.com for more details.

Let's remember to practise safe social distancing as well as to wear a mask and wash your hands frequently.

The following social distancing and health measure will apply to all Yoma Offices

- Temperature screening on entry to the office
- Hand sanitiser available in all meeting rooms and reception desks
- Observe 6 feet distance with work colleagues at all times
- Desks to be marked with an X to ensure appropriate social distancing
- Staff to wear masks in the office when social distancing cannot be maintained
- Staff to wear a mask if in a meeting room with other colleagues
- Temperature screenings on the Pun Hlaing Estate and StarCity Estate will continue

We request that all employees adhere to these measures for the health and safety of all Yoma employees.

Other measurements such as lunch hour arrangements are also put into place. We seek your understanding to follow them at all times. Together, we will get through this.

THE CAMPUS

RETURN TO WORK Travel options

OPTION 1
Campus Ferry (Free services)*

- Sanitise your hands before boarding.
- No mask, no ride.
- Only one person per row is allowed, do not sit on seats with a red cross.

*For more popular locations, multiple ferries will be arranged to ensure we get you back to work safe under social distancing rules.
*All ferries are sprayed and sanitised before and after a trip.

OPTION 2
Rent from Yoma CarShare (Special rate)

- Hourly rate as low as 2,480 MMK/ hour ++. (exclusive of 5% CT)
- To register and reserve your car, visit www.yomacarshare.com or aung@yomafleet.com. 24/7 Hotline: 09 966235338 (09YOMAFLEET)

*Hand sanitiser and masks will be available.

Ask HR
askhr@yoma.com.mm

THE CAMPUS

RETURN TO WORK Lunch Hour Arrangements

Do not share food

Do not share utensils

Do not crowd tables in the canteen

Follow the social distancing markers

ALL CAMPUS STAFF MUST FOLLOW THE FOLLOWING CANTEEN SCHEDULE

Ground Floor & Level 1	Level 2	Level 3
11:30 AM	12:00 PM	12:30 PM

All staff will have an hour lunch break but should only occupy the canteen for 30 minutes.
The same social distancing rules should apply to staff that eat in the office kitchens.

Ask HR
askhr@yoma.com.mm

HEALTHCARE

TeleMed - You have questions, we have answers

If you are not feeling well and think that you might be coming down with the flu, instead of going to the hospital, you now have the option of booking an appointment and seeing your doctor via online consultation.

The graphic provides a step-by-step on how to make an appointment for a Pun Hlaing Siloam TeleMed service and how to pay online.



WFH THE YOMA WAY

WFH in-a-box

It is our pleasure to have Professor Dr. Aung Tun Thet, our FMI non-executive director as well as Advisor to the UMFCCI, to host a series of 15 "live" sessions on various topics that aim to help us find focus and productivity in this time of "new norm". Sessions include "Finding Focus & Flow", "Self-efficacy" and "Work-life Balance."

The next 'live' session on "Managing Teams Remotely" will be held on 18th May.

WFH THE YOMA WAY

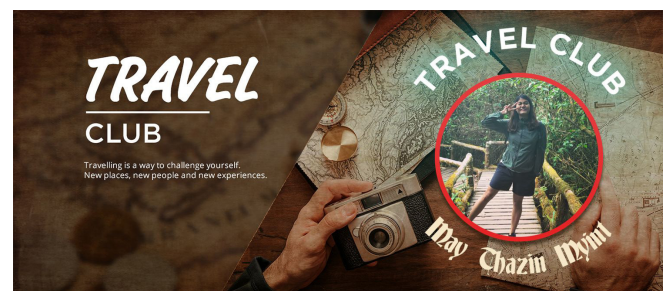
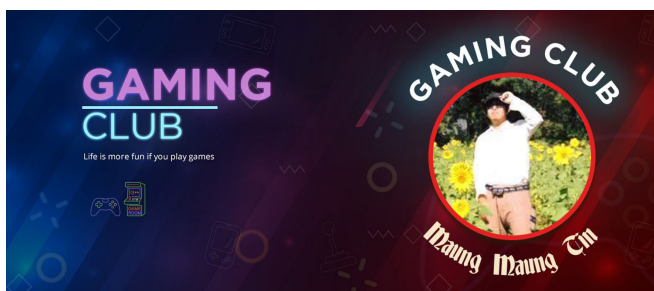
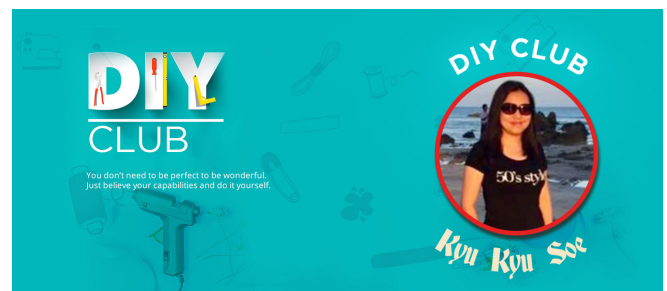
New Social Clubs

We have seen an increase in your participation in the Social Clubs we launched last week, and are excited to bring you more. Please join our new Yoma Social Warriors - Maung Maung, Tin Kyu Kyu Soe, May Thazin Myint - as they share their "outside of work" passion with you.

[Games Club](#) · [DIY Club](#) · [Travel Club](#)

Don't forget to also check out other social clubs launched last week: [Music Club](#), [Litflix Book Club](#) and [Cinema Club](#)

If you are interested in becoming one of our Yoma Social Warriors, please reach out to [May Thazin Myint](#).



WFH THE YOMA WAY

The Yoma Challenge winner for May is

Thank you to all our Yoma Jumpers who participated in this month's Yoma Challenge. Our winner of this challenge is: Team Jump Baby Jump! Congratulations also goes to Team Power+, Team Flying Pigs, Teambefit and Team Wings. Hope this challenge has encouraged you to build a great habit of staying fit and healthy!

We are looking for new and fun ideas for June. Don't hesitate; Workplace message [Yoon Shwe Sin](#) on ideas for our next Yoma Challenge.



EMPLOYEE REIMBURSEMENTS

Going paperless with your expense



Here's an exciting collaboration between Group Finance and Group Technology as they work towards an innovative solution for paperless and cashless reimbursements. This week, we have launched the first paperless and cashless process for Group Shared Services.

GSS staff can now fill out a digital reimbursement form and have it approved electronically. The money will then be disbursed to your Wave Money account.

Check out this short tutorial on how to submit claims online: <https://elearning.yomagroup.net/course/view.php?id=20>

For more information, please send your queries to: payments@yoma.com.mm or contact YSH Finance during office hours.

SPECIAL NOTE

We appreciate you

While many of us worked from home and continue to be with our families, there were many others who had to work outside of their homes; some even have had to live away from their families.

We would like to take this opportunity to thank them - to the security guards, cleaners, F&B staff and all other essential workers who have been living at The Campus and in our Estates since early April, while being apart from their families.

We thank you and we appreciate you!





PEOPLE 2020

Yoma Diversity Council

We invest in our people to build careers around a shared culture of fairness, diversity, empowerment and recognition. In solidarity with the LGBT community around the world, Yoma Group flies the rainbow flag from May 15 to 18.

#IDAHOTMyanmar2020



IN THE SPOTLIGHT

Congratulations to Yoma Heavy Equipment

Yoma Heavy Equipment will be supplying the Myanmar government its first combined harvester - the New Holland TC5.30 - which is the most productive multi-crop harvester in its segment.

The machine arrived in Yangon two weeks ago and YHE's technicians are busy assembling all the components, conducting all the necessary pre-inspections before delivering it to the government. A combined harvester machine is a versatile machine designed to efficiently harvest a variety of grain crops.



မြန်မာပြည်တွင်
အသက်သာဆုံး
CBM Network ငွေလွှဲဝန်ဆောင်မှု

YOMA BANK
The Responsible Bank.

IN THE SPOTLIGHT

Yoma Bank: No more inter-bank transfer fees

Yoma Bank is the first bank in Myanmar that has made inter-bank transfers free of charge for its customers in an effort to support businesses that may be facing challenges from the impacts of COVID-19 and to ensure the continuity of accessible banking services.

Starting 7th May, Yoma Bank is waiving Over the Counter (OTC) inter-bank transfer commission fee for Yoma Account Holders.

IN THE SPOTLIGHT

Tell a friend: KFC “walking delivery”

KFC-Myanmar recently launched its "walking delivery" service on 10th May. While on the road on foot, the delivery staff is required to follow the 6-feet distance service procedures and all hygiene practices for each delivery.

- (15) minutes of walking delivery
- Customers are served from 6 feet away to observe safe distancing
- Free delivery for 3,000 kyats and above
- Fast, safe and easy service

Show your support by ordering from these branches if you are working from home and living near any of them:

North Dagon (0.5 km radius), Thanlyin Market (1km radius) and Insein Phawkan (1km radius).



IN THE SPOTLIGHT

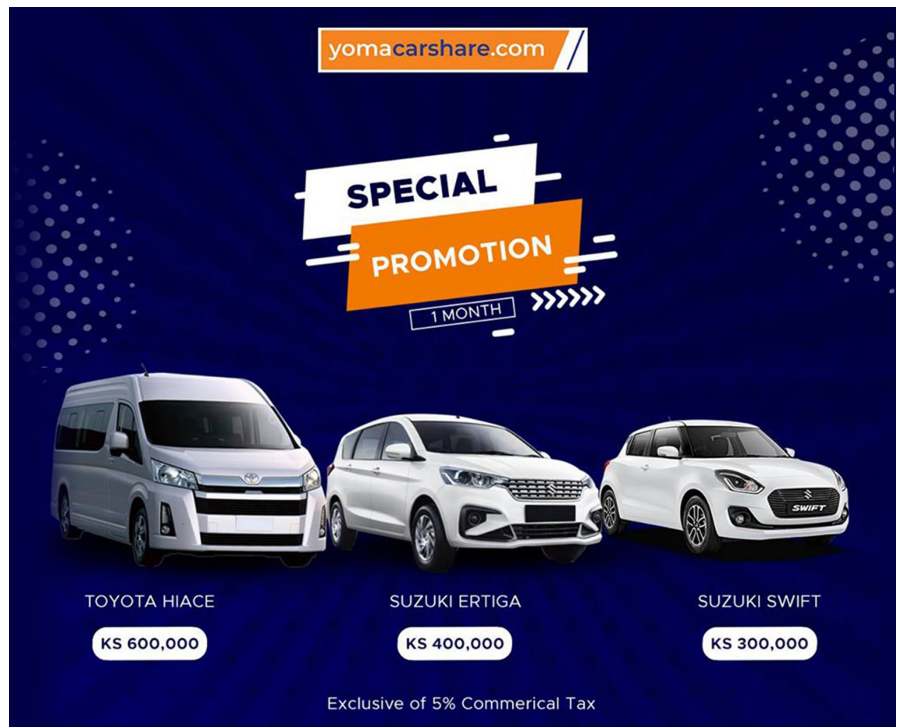
Yoma Car Share return-to-work solutions

Yoma Car Share, a self-drive car rental service that offers flexible rental periods (hourly, daily or monthly) is offering special rates to support the return-to-work transport solutions to corporates. For monthly rental, the promotional rates are (exclusive of 5% CT):

- Suzuki Swift at MMK 300,000
- Suzuki Ertiga at MMK 400,000
- Toyota Hiace Tourism at MMK 600,000

Yoma Car Share has 12 rental hubs and is growing in Yangon alone. A one-way drop rental is also available. For hourly rental, Swift and Ertiga can be rented as low as MMK 1,240 depending on the rental time. To register and reserve your car, visit www.yomacarshare.com or aung@yomafleet.com.

24/7 Hotline: 09 966235338 (09YOMAFLEET)



	Hourly 20:00-05:59	Hourly 06:00-08:59	Hourly 09:00-16:59	Hourly 17:00-19:59	Days 1-6	30-day	Price Per Kilometers
Swift	1,240	2,480	4,960	2,480	24,800	300,000	80
Ertiga	1,240	2,480	4,960	2,480	44,729	400,000	85

Donation of mask & soap to Nyaung Village

Many of you may already know of Step-in Step-up, Jackie Appel's Academy that delivers programmes to empower local youths with vocational skills.

Earlier this week, the Yoma Group partnered with SISU to distribute soaps and hand sewn reusable masks to the neighbouring village around Pun Hlaing Estate. The teams distributed 4,500 masks, 4,500 bars of soaps, 5,000 sachets of coffee and 60 packets of peanuts to highlight the importance of protecting against COVID-19.

SISU was started by Jackie in 2016. She wanted to help encourage confidence in young ladies living in the village next to Pun Hlaing Estate. These young ladies became her students and they were taught general housekeeping and basic English. Boys were invited into the programme and a vocational skills rotation was created.



JOIN IN THE FUN

Sudoku Challenge

Sudoku, anyone? Join in and send your results to our Yoma Social Warrior for Gaming maungmaungtin@yoma-agri.com. We will announce the results in our next issue. Credits to Ko Maung Maung Tin.

2	8	5	7	1	
		2			4
4	3		6		8
		8		3	1
9	8	7	3		
		5		4	7
1	8		9		
	7	2		1	6
	5				



askhr@yoma.com.mm