

# Yoma Bulletin

## Group-wide weekly highlights

Issue One | 11 May 2020

## Returning to Work

*Gradual back to work starting 18<sup>th</sup> May*

- ✚ Split teams – Work From Home and Work From Office teams
  - 🕒 Staggered work & break times
  - 📄 Safe Entry at workplaces
  - 🚪 Safe spacing between staff in the office and ferry shuttles
  - 😷 Wear masks on-premises
- Remember: good hygiene and physical distancing are most important.



HEALTHCARE FEATURE

## We Got You Covered

*Did you know that if you are a permanent full-time Yoma staff, you are eligible for health insurance? Find out more ...*

“A healthier you, a healthier community”, “Better health, better life” - You may have most probably come across some of these catchy slogans related to health insurance. For many of us, insurance is something we don't think about until we need it; and sometimes it may be too late because when we actually do need it, we realise then that we don't have the right insurance coverage.

**1. The Yoma Group Medical Plan:** This plan provides inpatient, outpatient, and life insurance coverage. What this means is that if you fall ill, get injured, or need to stay in the hospital, your medical bills will be partially covered. We have recently reviewed our existing medical policy and have made changes to the benefit levels.

**2. Additional COVID-19 Coverage:** We have extended our medical claim policy of our existing healthcare coverage and insurance to include additional COVID-19 coverage for outpatient, inpatient claims. If you are a frontline staff where your potential exposure to COVID-19 virus is likely to be higher – for example, YKKO, KFC, etc – you will have more coverage.

**3. Pun Hlaing Siloam Hospital TeleMed Consultation (Viber):** With heightened physical distancing measures, we have a “virtual care” programme where patients who are not well can dial a doctor from the safety of their own home. This allows those who feel unwell or non-emergency cases to avoid having to go to the hospital. We have this covered as well. It feels good to be covered, but it feels better to stay healthy.

Please refer to [Yoma Connect](https://yomagroup.net) for more information on your health insurance and coverage, and if you have any questions, do email [AskHR@yoma.com.mm](mailto:AskHR@yoma.com.mm)

YOMA FMI  
YOMA GROUP

YOMA  
PEOPLE 2020

Did you know ...  
All permanent Yoma employees are eligible for health insurance?

**YOMA GROUP HEALTHCARE COVERAGE & INSURANCE**

- 1 Yoma Group Medical Plan - Outpatient, Inpatient and Life Insurance coverage
- 2 Pun Hlaing Siloam Hospital TeleMed Consultation (Viber)
- 3 COVID-19 Health Insurance for Frontline Staff

More information?  
[YOMA CONNECT](https://yomagroup.net)  
<https://yomagroup.net>

Any questions?  
[AskHR](mailto:askhr@yoma.com.mm)  
[askhr@yoma.com.mm](mailto:askhr@yoma.com.mm) Workplace Chat: AskHR

# WFH in-a-box

WORK FROM HOME THE YOMA WAY

in-a-box  
Emerge Stronger, Smarter & Faster

WFH THE YOMA WAY

## WFH in-a-box

An online learning programme

WFH In-a-Box is a new learning program launched last week. It is developed by the Group Talent and Development team and will consist of a 6-week program that aims to help managers build productivity, efficiency, and camaraderie with their teams in a WFH setting. More details will be shared by Ko Sai Woone Seng [saiwooneseng@yoma.com.mm](mailto:saiwooneseng@yoma.com.mm).

# WFH WELLNESS

WORK FROM HOME THE YOMA WAY

WELLNESS  
Emerge Stronger, Smarter & Faster

WFH THE YOMA WAY

## WFH Wellness Center

A healthy body and a healthy mind is a recipe for growth and wellness

While working from home, we want to encourage wellness amongst our employees. WFH Wellness Center is a new platform created to help our employees stay well mentally and physically.

Last week, we are introducing our two inhouse training talents who will host online wellness sessions for us. We are looking for more talents to join us as host. Email [AskHR@yoma.com.mm](mailto:AskHR@yoma.com.mm) for more details.

## WFH THE YOMA WAY Social Clubs

A series of activities to encourage employee engagement and build camaraderie

We work to not only support your career development but also support your personal passions and well-being. Taking the lead are The Yoma Social Warriors, who will share their 'outside-of-work' passion with us. If you have a similar interest, join their Social Club now!

WFH THE YOMA WAY

# The Yoma Challenge

Join in the Fun on Workplace

Have you Jumped yet? Which team will you join?

- #FlyingPigs
- #JumpBabyJump
- #TeamPower+
- #Teambefit
- #TeamWings

Every Jump counts.



## Leave Policy

The changes to the leave cycle started on 1<sup>st</sup> April. The [Yoma Connect](#) App has allocated the leave balances of all staff for the period between April 2020 to March 2021.

Please check your leave balance and email [AskHR@yoma.com.mm](mailto:AskHR@yoma.com.mm) if you have any questions. Note that any carry forward leave must be used by end of June 2020.



PEOPLE 2020

## YOM@Yoma

Your Opinion Matters - the results are out and you have spoken.

Thank you for participating in the Employee Satisfaction Survey 2020. Take a look at the graphics for key highlights and insights. We will be sharing more with you - stay tuned.

YOMA FMI YOMA GROUP logo and YOMA PEOPLE 2020 logo.

**Thank you**  
ကျေးဇူးတင်ပါသည်။

**78%** Participation across the Group

**5839 surveys recieved**

YOMA FMI YOMA GROUP logo and YOMA PEOPLE 2020 logo.

**Key Themes**

Management	စီမံခန့်ခွဲမှု
Family mindset	မိသားစုစိတ်ဓာတ်
Coworkers	လုပ်ဖော်ကိုင်ဖက်
International standards	နိုင်ငံတကာ အဆင့်မီ
Respect	လေးစားမှု
Safety at workplace	လုပ်ငန်းခွင် ဘေးကင်းလုံခြုံမှု

YOMA FMI YOMA GROUP logo and YOMA PEOPLE 2020 logo.

Employees' opinions came from variety of channels!

Channel	Percentage
PAPER	34%
SMS	38%
EMAIL	28%



# Cloth Face Masks

*Let's choose Cloth / Fabric Face Masks as a sustainable choice!*



Cloth masks are washable, reusable and recyclable. Fabrics such as cotton prevents liquid droplets from passing through and therefore provides incremental protection against airborne particles.

Obviously, frontline works have to use disposable masks for safety reasons. But for daily usage, a cloth mask is a sustainable option; it help to reduce waste, is less expensive and helps to alleviate the current medical supply shortage.

Reference: <https://et2c.com/cloth-face-masks-sustainable-choice/>

## *Dispose gloves and face masks properly to protect our environment*

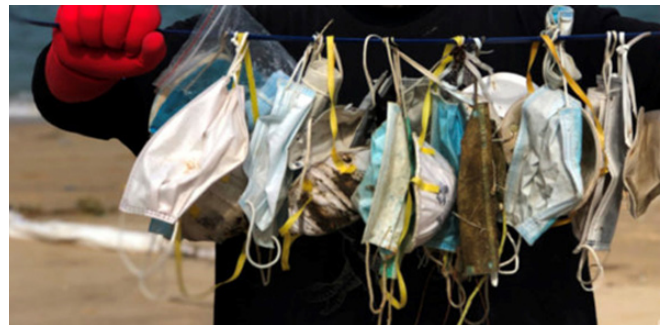
Gloves, masks and other personal protective equipment (PPE) are critical for those fighting the pandemic. It is important to dispose these materials properly after use in order to protect our environment and wildlife.

"If they're thrown on the streets, when it rains the gloves and masks will eventually end up in the sea," said Anastasia Miliou, a marine biologist and research director with the Archipelagos Institute of Marine Conservation based in Greece.

Reference: <https://www.dw.com/en/coronavirus-plastic-waste-polluting-the-environment/a-53216807>



*Environmentalists such as Stokes fear discarded masks and gloves will add to the ongoing fight against plastic pollution in the sea*



*Gary Stokes from OceansAsia conservation group holds up surgical masks found on Soko Islands*

YOMA FMI  
YOMA GROUP

YOMA  
PEOPLE 2020

# YOMA TOWN HALL

Friday 15<sup>th</sup> May 2020 • 3:00 PM (YGN Time) / 4:30 PM (SG Time)

Send us your questions:  
tracyting@yoma.com.mm or via Workplace Chat

**LIVE**

YOMA FMI  
YOMA GROUP

YOMA  
PEOPLE 2020

**Ask**<sup>HR</sup>

askhr@yoma.com.mm